

## Nature Had The Idea First

We believe that naturally pure, healthy water is a fundamental right. We are committed to bringing pure, healthy water for drinking, recreation and industry, in sustainable, innovative ways. Join us.



## Sphagnum Moss

The Sphagnum moss used in our products is a natural, green plant that grows in bogs. It is harvested by hand, in a sustainable manner, can be re-harvested in 5-7 years, is processed, sterilized and packaged.



## Advantages

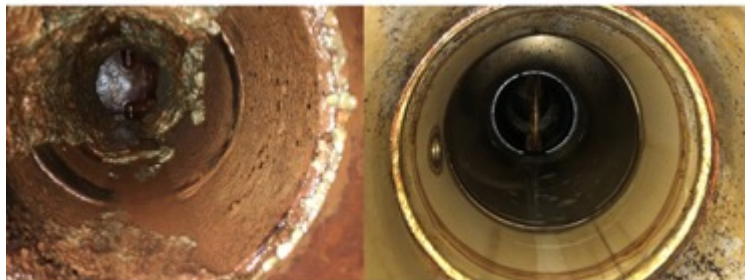
- Decreases water use (increases the cycles of concentration in cooling towers)
- Reduces chemical use and disposal
- Improves water quality, clarity, stability
- Can reduce heavy metal ions
- Improves efficiency of heat transfer by removing organic contamination and scale resulting in energy savings
- Prolongs equipment life
- Reduces maintenance and cleaning on surfaces in contact with ProMoss™ treated water
- Satisfies demand for sustainable facility management practices



Nonfood Compounds  
(Category Code G5,G7)



Start of ProMoss™ treatment



3 months later

18 months later

CWS has contact chambers for every application and system setup. Open cage submersible chambers are used when there is an open body of water to be treated. The offline contact chambers are uniquely designed to create a tumbling action that creates maximal moss and water interface.

Providing  
naturally pure,  
healthier water.

# Activities

- Inhibits and removes scale
- Decreases corrosion on surfaces the ProMoss™ treated water touches
- Removes positively charged ions like calcium, iron, magnesium, zinc, cadmium etc.
- Removes organic contamination from surfaces the ProMoss™ treated water touches
- Absorbs 10X its weight in oil
- Stabilizes water pH and slightly acidifies the water



Oil contaminatated cooling water

With ProMoss™ treatment



## Delivery Systems

- Requires water flow across the ProMoss™
- ProMoss™ is stable to 250° F
- Submersible contact chambers that require no structural modifications
- Bypass contact chambers for closed systems or when submersible contacts chambers are not appropriate
- Changed monthly

## Systems Treated

- Cooling towers
- Hot and cold water loops
- Reclaimed water
- Cisterns
- Process water applications
- Waste water applications
- Ponds
- Fountains



## Contact Information

13809 Industrial Park Blvd.  
Plymouth, MN 55441  
**Phone** (763) 398-0141  
info@cwsnaturally.com  
www.cwsnaturally.com



Providing naturally pure, healthier water.