



CREATIVE  
WATER  
SOLUTIONS

# Breakaway<sup>®</sup> Flush Air Scouring

Step by step instructions for Air Scouring a traditional media filter with Breakaway<sup>®</sup> flush

# Preparing the filter system for Breakaway<sup>®</sup> flush air scour



Step 1:  
Identify the outflow pipe from the filter. Drill hole to allow insertion of a 3/4" tap.



Step 2:  
Tap the hole for 3/4" MPT fittings



Step 3:  
Attach nipple-valve-quick release assembly (parts included in Breakaway<sup>®</sup> Air Scour kit). Close the valve.



Step 4:  
Female end of hose will easily connect.

# Steps for performing a Breakaway® flush air scour



Step 1:  
Check and record the differential pressure, prior to starting the process.



Step 2:  
Backwash the filter.



Step 3:  
Isolate the filter(s) to be air scoured from the pool inflow. (Through multi-port or separate valve.)



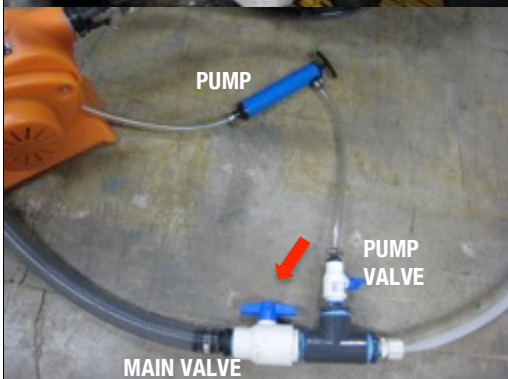
Step 4:  
If possible, remove the filter body access hatch. If not possible, open the air relief valve on the filter.



**Step 5:**  
If the hatch can be opened, inspect the media and remove all matted debris. (This step adds to process efficiency.)



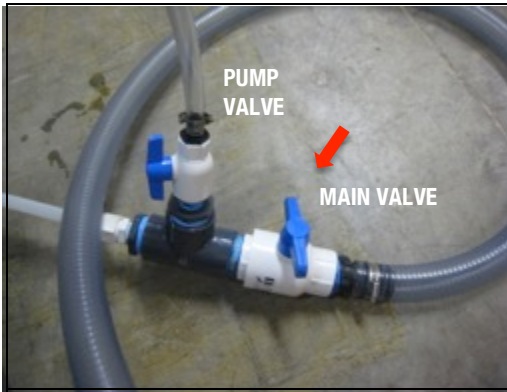
**Step 6:**  
Attach the air hose to the quick connect on discharge/outflow pipe of the filter.



**Step 7:**  
Turn on the blower and immediately open the valve to deliver air to the filter.



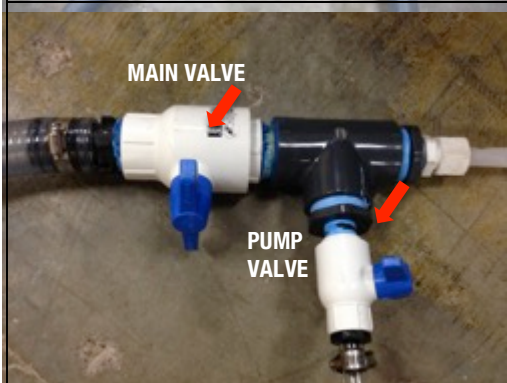
**Step 8:**  
The water will achieve a “rolling boil”, but does not eject media out of the filter. Run for 15 minutes.



**Step 9:**  
Turn off the blower and close the main valve from the blower to the “T” and open the valve to the hand pump.



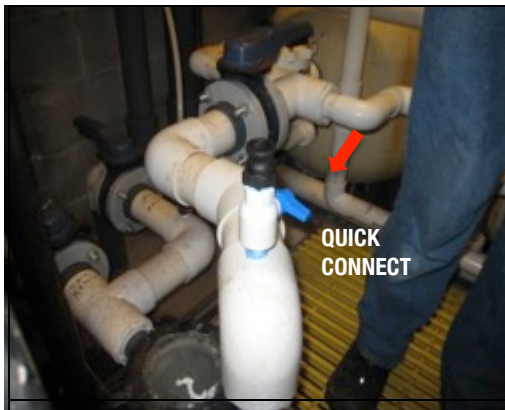
**Step 10:**  
Using the hand pump that is attached to the “T”, pump Breakaway<sup>®</sup> into the filter. Dose 4 Liters/ 1.06 Gallons to every .93 square meters/ 10 square feet of filter surface area.



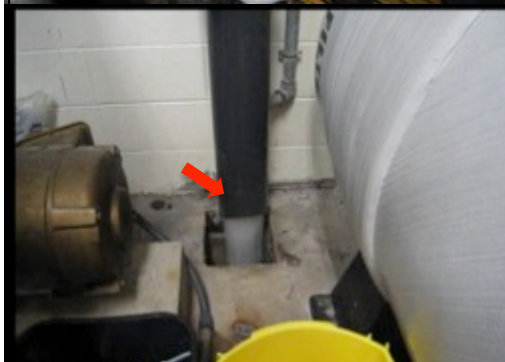
**Step 11:**  
Close the valve to the hand pump.



**Step 12:**  
Turn on the blower, open the main valve and boil for 15 minutes.



**Step 13:**  
After 15 minutes, turn off blower and main valve.  
Turn off valve at the pipe and allow the Breakaway<sup>®</sup> to sit for at least half an hour - longer if possible. Close access port to the filter body or close air relief valve.



**Step 14**  
Backwash the filter until the water becomes clear and does not foam.



**Step 15:**  
Restart filtration.



**Step 16:**  
Check and record the differential pressure, after finishing the process.

## So, you have air scoured a filter. When should it be done again?

1. When backwashing only results in half the differential pressure normally achieved during a backwash cycle, it is time to perform another air scour. (For example - if you normally backwash when the pressure differential achieves 10 PSI, and backwashing alone only results in a drop to a 5 PSI differential - air scour again)
2. Get your customer on a schedule. Air scour pool filters one a year and spa filter every six months.

# Creative Water Solutions

## Contact Information

### Creative Water Solutions

13809 Industrial Park Blvd.

Plymouth, MN 55441

Phone (763) 398-0141

Fax (763) 551-2572

info@cwsnaturally.com

www.cwsnaturally.com

