



CREATIVE
WATER
SOLUTIONS

Breakaway[®] Flush Air Scouring

Step by step instructions for Air Scouring a traditional media filter with Breakaway[®] flush

Preparing the filter system for Breakaway[®] flush air scour



Step 1:
Identify the outflow pipe from the filter. Drill hole to allow insertion of a 3/4" tap.



Step 2:
Tap the hole for 3/4" MPT fittings



Step 3:
Attach nipple-valve-quick release assembly (parts included in Breakaway[®] Air Scour kit). Close the valve.



Step 4:
Female end of hose will easily connect.

Steps for performing a Breakaway® flush air scour



Step 1:
Check and record the differential pressure, prior to starting the process.



Step 2:
Backwash the filter.



Step 3:
Isolate the filter(s) to be air scoured from the pool inflow. (Through multi-port or separate valve.)



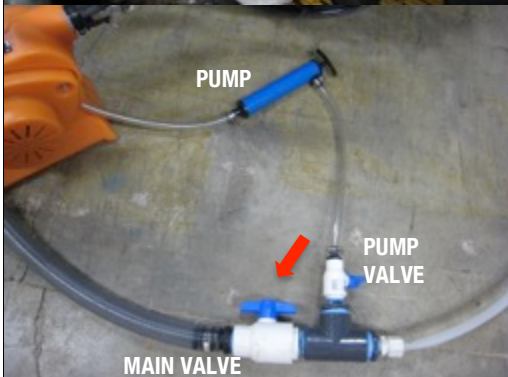
Step 4:
If possible, remove the filter body access hatch. If not possible, open the air relief valve on the filter.



Step 5:
If the hatch can be opened, inspect the media and remove all matted debris. (This step adds to process efficiency.)



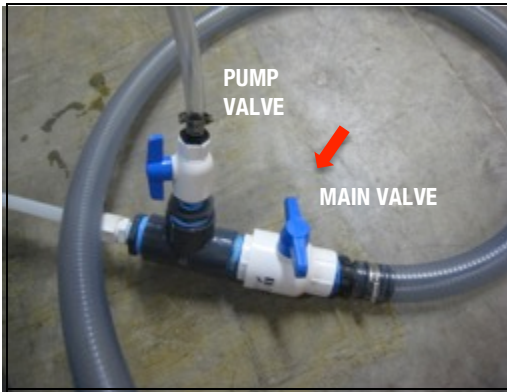
Step 6:
Attach the air hose to the quick connect on discharge/outflow pipe of the filter.



Step 7:
Turn on the blower and immediately open the valve to deliver air to the filter.



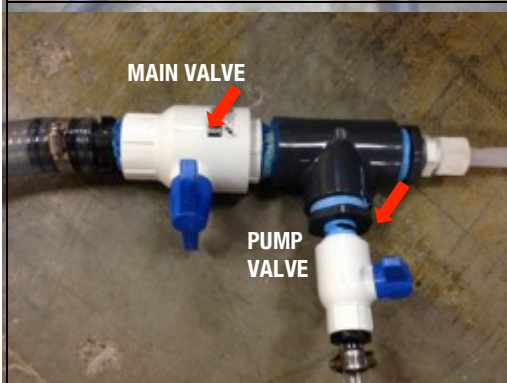
Step 8:
The water will achieve a “rolling boil”, but does not eject media out of the filter. Run for 15 minutes.



Step 9:
Turn off the blower and close the main valve from the blower to the “T” and open the valve to the hand pump.



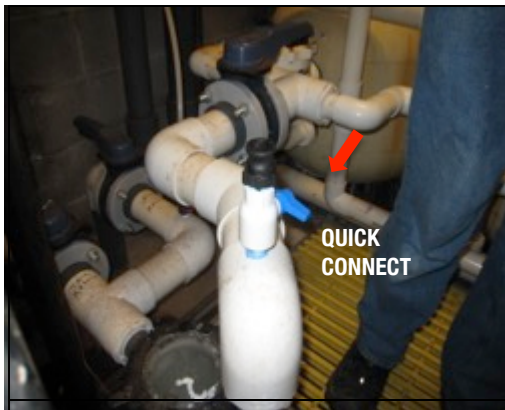
Step 10:
Using the hand pump that is attached to the “T”, pump Breakaway[®] into the filter. Dose 4 Liters/ 1.06 Gallons to every .93 square meters/ 10 square feet of filter surface area.



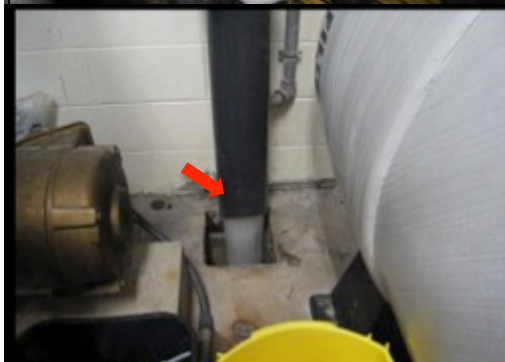
Step 11:
Close the valve to the hand pump.



Step 12:
Turn on the blower, open the main valve and boil for 15 minutes.



Step 13:
After 15 minutes, turn off blower and main valve.
Turn off valve at the pipe and allow the Breakaway[®] to sit for at least half an hour - longer if possible. Close access port to the filter body or close air relief valve.



Step 14
Backwash the filter until the water becomes clear and does not foam.



Step 15:
Restart filtration.



Step 16:
Check and record the differential pressure, after finishing the process.

So, you have air scoured a filter. When should it be done again?

1. When backwashing only results in half the differential pressure normally achieved during a backwash cycle, it is time to perform another air scour. (For example - if you normally backwash when the pressure differential achieves 10 PSI, and backwashing alone only results in a drop to a 5 PSI differential - air scour again)
2. Get your customer on a schedule. Air scour pool filters one a year and spa filter every six months.

Creative Water Solutions

Contact Information

Creative Water Solutions

13809 Industrial Park Blvd.

Plymouth, MN 55441

Phone (763) 398-0141

Fax (763) 551-2572

info@cwsnaturally.com

www.cwsnaturally.com

